

# iDock® Controls Dock Communication System



\* Integrated controller shown with available options, restraint, leveler, door and emergency stop.

## FEATURES

- Advanced controls of loading dock equipment
- Interactive message display with system information
- View equipment usage and maintenance history
- Raised dome button design for ease of use
- Fault code troubleshooting display and internal LED lights
- Integrated controls of all Poweramp dock equipment and dock door installed
- 3-color light communication system
- NEMA 4x enclosure
- Design and manufactured in the USA

Connect online  
 with

**myQ**  
 Enterprise

A Division of Systems, LLC

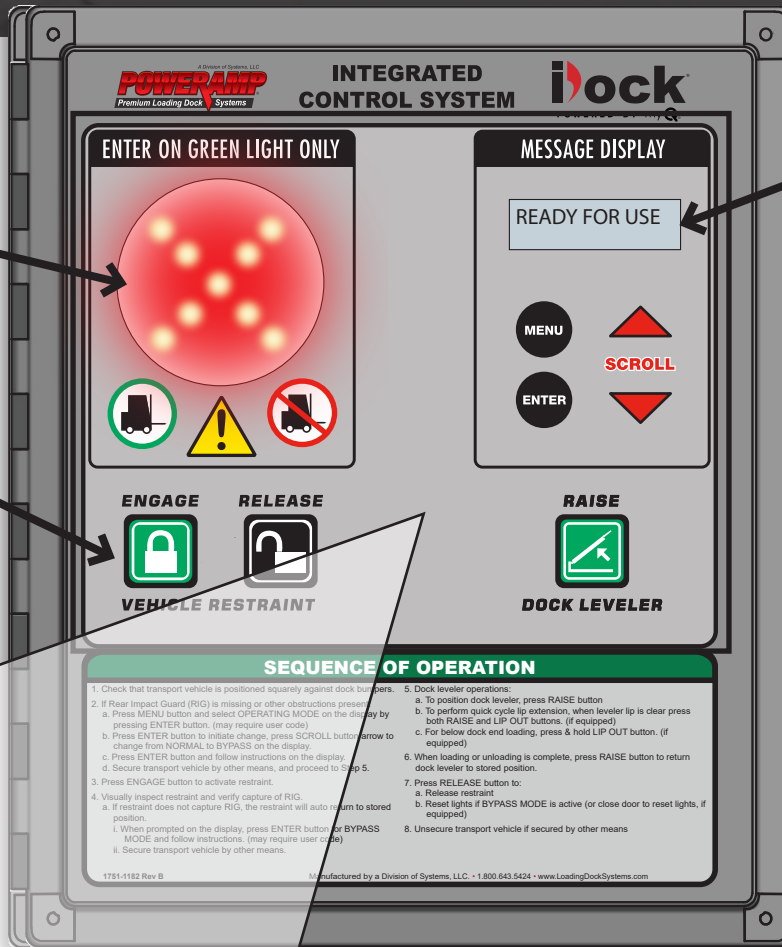
**POWERAMP**  
 Premium Loading Dock Systems

## ADVANCED 3-COLOR LIGHT COMMUNICATION

Compared to other standard green and red systems, iDock<sup>®</sup> Controls utilize an additional third amber light if a fault is detected or restraint is in bypass mode.

## OPERATOR INTERFACE

Using membrane dome button technology, operators can clearly feel and hear when they press a button, confirming that the equipment will begin operation.



## INTERACTIVE MESSAGE DISPLAY INCLUDES:

### Equipment Information

Access information about your dock equipment, including the serial number, installation date, and the door number.

### Systems Information

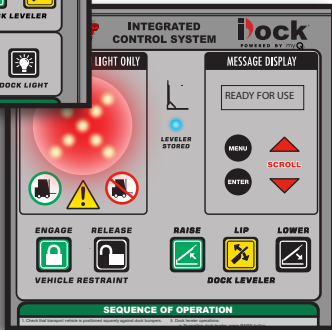
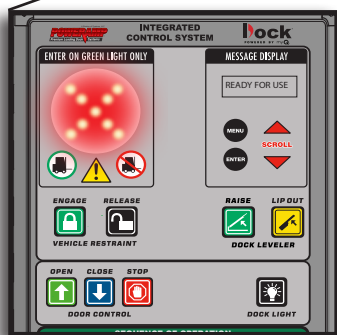
View detailed information regarding your installed dock equipment and the options that are currently active.

### Maintenance History

See all of your maintenance records as well as schedule a maintenance reminder that will alert you when the scheduled day has come.

### Counters

View your loading dock equipment statistics, such as cycle counts, optional forklift activity, faults, and more.



## INTEGRATED CONTROLS

iDock Controls integrate your installed Poweramp dock levelers, vehicle restraints, and other dock accessories, as well as LiftMaster door operators. Interlocking equipment controls provides a sequence of operation for your dock equipment, improving safety and energy efficiency.

**Boost Productivity | Simplify Maintenance**  
**Prioritize Safety | Tighten Security**

W194N11481 McCormick Dr. | Germantown, WI 53022  
poweramp.com | sales@poweramp.com  
800-643-5424



poweramp.com

Designed, Engineered, and Manufactured in the U.S.A.  
© 2024 Systems, LLC/Poweramp  
Consistent with our policy of continuing product improvement, we reserve the right to change product specifications without notice or obligation.

A Division of Systems, LLC

**POWERAMP**  
Premium Loading Dock Systems