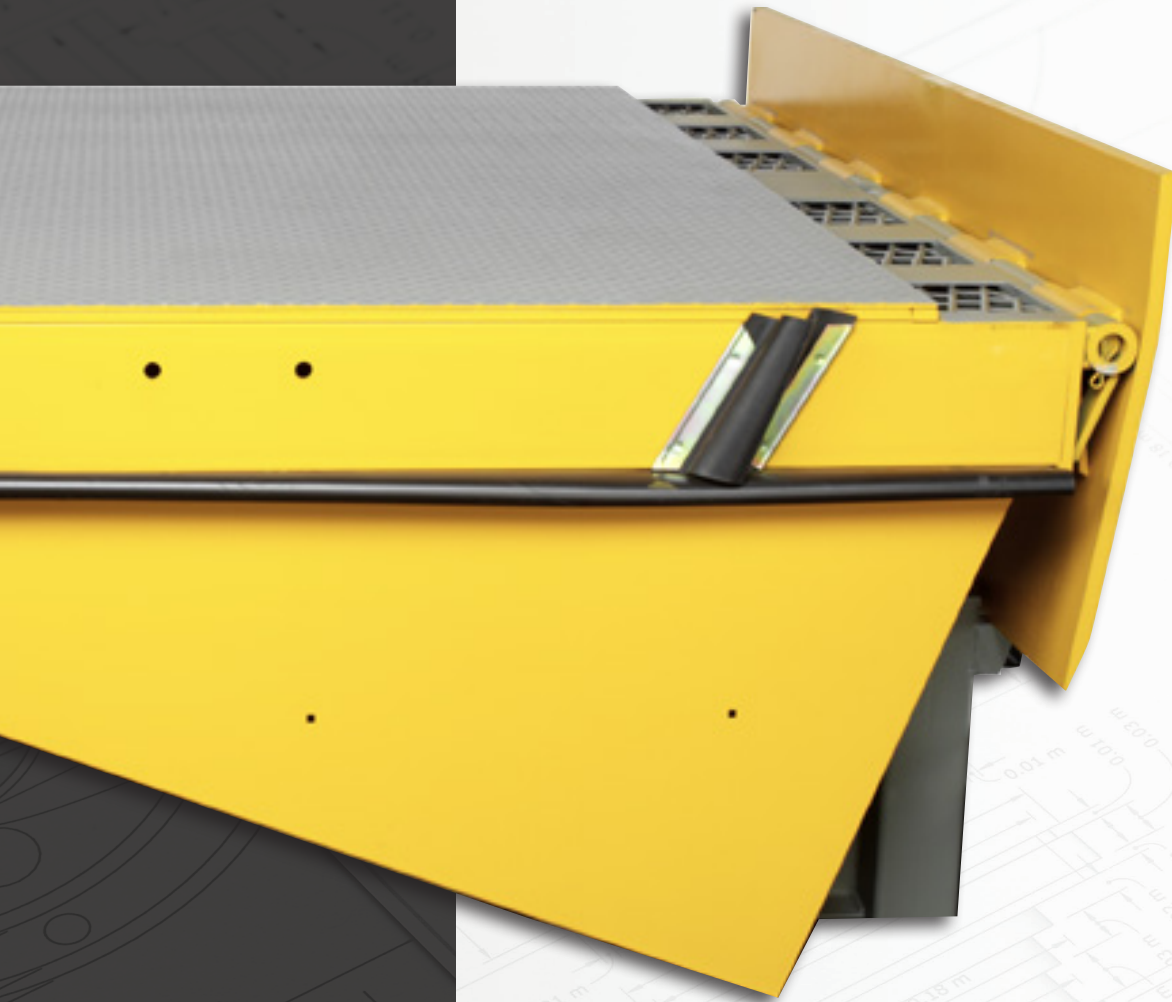


## Barrier Lip Series Safety Barrier



### FEATURES

- Smooth transition between the levelers platform and lip
- End load achievable
- Self-cleaning, recessed hinge pocket
- One-button control of leveler and lip
- High visibility yellow paint highlights barrier lip
- Full hydraulic operation
- Standard barrier height of 5"
- Limits accidental run-off of equipment and personnel at dock
- Automatic recycle to stored position from above dock
- Barrier provides full-time protection even during end loads
- Design and manufactured in the USA

\* Barrier Lip shown on PR leveler with optional rubber weather seal. Standard controls shown.

# Barrier Lip Series Safety Barrier

## SAFETY BARRIER

The Poweramp® Barrier Lip combines safety with Poweramp's superior structural steel ramp design to enhance productivity and prevent accidental forklift roll-off at the loading dock.

## OPERATION

While stored, the Barrier Lip extends 5" above the cross traffic position, providing a full dock width solid steel barrier. When the operator depresses the Raise button on the controls, the Barrier Lip is automatically extended out as the leveler rises. Once the Barrier Lip is extended, the control button can be released, lowering the lip onto the truck trailer.

After loading/unloading is complete, the operator depresses the raise button again, lifting the leveler and automatically dropping the Barrier Lip, allowing it to be lowered to the stored position.

## SAFETY FEATURES

- Retracting lip cylinder allows the Barrier Lip to immediately move into vertical position in the event of a premature truck departure.
- Full dock width and 5" above the cross traffic position.
- Stop a 10,000 lb. impact from a forklift truck at 4 mph.
- High visibility yellow paint to highlight the Barrier Lip.

## HYDRAULICS

When used with the PR, VH, or XL Hydraulic Levelers, the Barrier Lip is equipped with Poweramp's patented fluid logic system. Fluid logic controls every dock leveler function eliminating the need for solenoids and external electric valves. The fluid logic system provides consistent operation under all conditions, resulting in lower maintenance and ownership cost over the life of the dock leveler.

Poweramp's main lifting cylinders are a unique, low pressure (225 psi) hollow ram design, with hard chrome plating for longer life. The double sealed cylinders include rod wipers and are self-bleeding.



## LEVELER CONSTRUCTION

All Poweramp Levelers are built with a durable four-sided box construction. The use of structural steel C channels or I beams create substantially more deck support than other levelers.

## AVAILABLE ON:

- PR Series
- AP Series
- XL Series
- CA Series
- VH Series

## BARRIER LIP

## ADDITIONAL OPTIONS

CentraPower™  
Integrated control panel  
Custom interlocking  
Vehicle restraints  
7" barrier

W194N11481 McCormick Dr. | Germantown, WI 53022  
poweramp.com | sales@poweramp.com  
800-643-5424



poweramp.com

*Designed, Engineered, and Manufactured in the U.S.A.*  
© 2024 Systems, LLC/Poweramp  
*Consistent with our policy of continuing product improvement, we reserve the right to change product specifications without notice or obligation.*

BARRIER LIP 12/2024

A Division of Systems, LLC  
**POWERAMP**  
Premium Loading Dock Systems