

VH Series Hydraulic Dock Leveler



25K - 80K
CIR

6' - 7'
WIDTH

6' - 12'
LENGTH

FEATURES

- Fluid logic block
- Internal tamperproof velocity fuse
- Low pressure hollow ram hoist cylinder
- Push-button activation
- Retractable lip cylinder
- Safety yellow full-range toe guards
- Structural support members
- Translucent reservoir
- Below dock end loading capability
- CleanSweep frame design
- Four-sided box construction deck assembly
- Lockout/tagout maintenance strut
- Night locks/cross traffic support
- Design and manufactured in the USA

Connect online
with

myQ
Enterprise

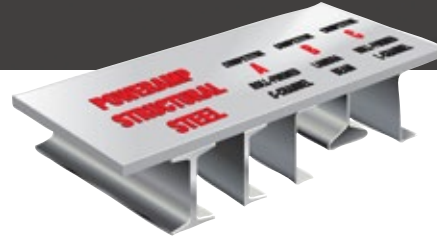
* VH Series 6'x8' 35,000 CIR,
CleanSweep frame with stand
alone controller shown.

VH Series Hydraulic Dock Leveler

25K - 80K
CIR

6' - 7'
WIDTH

6' - 12'
LENGTH

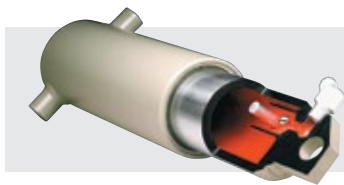


OPERATION

The Poweramp VH Series Leveler utilizes a hydraulic operation with push-button activation to raise the leveler and automatically extend the lip. The standard lip is 16", with an operating range of 12" above and below dock level. The platform is designed to compensate for canted truck beds up to 4" and remain flush with the dock floor.

SAFETY FEATURES

- Tamper proof in-line velocity fuse that will lock the leveler in position (+/-3") if the truck pulls away while in use
- Fluid logic block controls flow of hydraulic fluid
- Built-in lockout/tagout maintenance inspection strut
- Full-range telescoping toe guards close off sides even in highest position
- Lip keepers for cross traffic support and automatic night lock security against theft



In-line velocity fuse built into the main lifting cylinder for free fall protection.

CONSTRUCTION

The VH Series combines a structural steel ramp design with a proven hydraulic operation to produce a safe, reliable, yet economic hydraulic dock leveler. All Poweramp levelers are built with a durable four-sided dock leveler. The use of structural steel C channels or I beams create substantially more deck support than other levelers.

The lifting cylinder is a unique, low pressure hollow ram design with hard chrome plating for longer life. The double sealed cylinders include rod wipers and are self bleeding. The 1.5 HP motor provides a smooth and quiet operation.



CONNECTIVITY

Optional iDock® Controls with online connection to myQ® Enterprise.



VH SERIES COMMON OPTIONS

3-wheel offset forklift protection

CentraPower

Custom interlocking

Dock alert light communication system

Dock lights

Emergency stop button

Extended lip sizes (18" and 20")

Foam insulated deck

Integrated control panel

Quick cycle lip extend (push button)

Safety barrier lip

Vehicle restraint

Vertical dock bumpers

Weather seal (brush or rubber)



VEHICLE RESTRAINTS & ACCESSORIES

For enhanced safety, all Poweramp levelers can be equipped with light communication, iDock Controls, and vehicle restraints, which help prevent unexpected trailer departure from the loading dock. Safety barriers are also available to prevent forklift trucks from driving over the dock edge.

W194N11481 McCormick Dr. | Germantown, WI 53022
poweramp.com | sales@poweramp.com
800-643-5424



poweramp.com

Designed, Engineered, and Manufactured in the U.S.A.
© 2024 Systems, LLC/Poweramp
Consistent with our policy of continuing product improvement, we reserve the right to change product specifications without notice or obligation.

VH 09/2024

A Division of Systems, LLC
POWERAMP
Premium Loading Dock Systems