

# PR Series Hydraulic Dock Leveler



**30K - 120K**  
CIR

**6' - 7'**  
WIDTH

**6' - 12'**  
LENGTH

## FEATURES

- Automatic return to dock from all positions
- Deck mounted pump and motor
- Dual control lanyard
- Fluid logic block
- Folding and locking toe guards
- Internal tamperproof velocity fuse
- Low pressure hollow ram hoist cylinder
- Maintenance inspection plate
- Push-button activation
- Quick cycle below dock control
- Retractable lip cylinder
- Structural support members
- Below dock end loading capability
- CleanSweep frame design
- Four-sided box construction deck assembly
- Lockout/tagout maintenance strut
- Night locks/cross traffic support
- Design and manufactured in the USA

Connect online  
with

**myQ**  
Enterprise

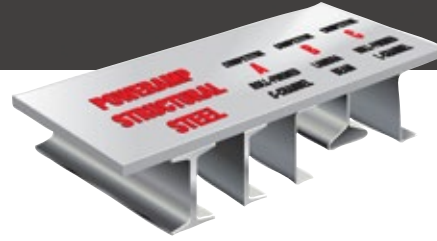
*\* PR Series 6.5'x8' 45,000 CIR with  
optional rubber weather seal and stand  
alone controller shown.*

# PR Series Hydraulic Dock Leveler

30K - 120K  
CIR

6' - 7'  
WIDTH

6' - 12'  
LENGTH



## OPERATION

The Poweramp PR Series leveler utilizes a hydraulic operation with push-button activation to raise the leveler and automatically extend the lip. The standard lip is 16" (18" on higher capacities), with an operating range of 12" above and below dock level. The platform is designed to compensate for canted truck beds up to 4" and remain flush with the dock floor.

## SAFETY FEATURES

- Tamper proof in-line velocity fuse that will lock the leveler in position (+/-3") if the truck pulls away while in use
- Fluid Logic Block controls the flow of hydraulic fluid
- Deck-mounted pump and motor with maintenance check plate in deck
- Built-in lockout/tagout maintenance inspection strut
- Folding and locking toe guards close off sides even at the highest position
- Lip keepers for cross traffic support and automatic night lock security against theft



Maintenance inspection plate in the deck to allow for maintenance above the dock.

## VEHICLE RESTRAINTS & ACCESSORIES

For enhanced safety, all Poweramp levelers can be equipped with light communication, iDock Controls, and vehicle restraints, which help prevent unexpected trailer departure from the loading dock. Safety barriers are also available to prevent forklift trucks from driving over the dock edge.

## CONSTRUCTION

The PR Series combines a structural steel ramp design with a proven hydraulic operation to produce a safe, reliable, yet economic hydraulic dock leveler. All Poweramp levelers are built with a durable four-sided box construction. The use of structural steel C channels or I beams create substantially more deck support than other levelers.

The lifting cylinder is a unique, low pressure hollow ram design with hard chrome plating for longer life. The double sealed cylinders include rod wipers and are self bleeding. The 1.5 HP motor provides a smooth and quiet operation.



## CONNECTIVITY

Optional iDock® Controls with online connection to myQ® Enterprise.



## PR-SERIES COMMON OPTIONS

- 3-wheel offset forklift protection
- CentraPower
- Custom interlocking
- Dock alert light communication system
- Dock lights
- Emergency stop button
- Extended lip sizes (18" and 20")
- Foam insulated deck
- Integrated control panel
- Quick cycle lip extend (push button)
- Safety barrier lip
- Vehicle restraint
- Vertical dock bumpers
- Weather seal (brush or rubber)



W194N11481 McCormick Dr. | Germantown, WI 53022  
poweramp.com | sales@poweramp.com  
800-643-5424



poweramp.com

Designed, Engineered, and Manufactured in the U.S.A.  
© 2024 Systems, LLC/Poweramp  
Consistent with our policy of continuing product improvement, we reserve the right to change product specifications without notice or obligation.

PR 09/2024

A Division of Systems, LLC  
**POWERAMP**  
Premium Loading Dock Systems