

LHP Series Hydraulic Dock Leveler



25K - 40K
CIR | **6' - 7'**
WIDTH | **6' - 8'**
LENGTH

FEATURES

- Push-button activation
- Safety velocity fuse
- Safety yellow full-range toe guards
- Translucent reservoir
- Below dock end loading capability
- CleanSweep frame design
- Four-sided box construction deck assembly
- Lockout/tagout maintenance strut
- Night locks/cross traffic support
- Design and manufactured in the USA

Connect online
with

myQ
Enterprise

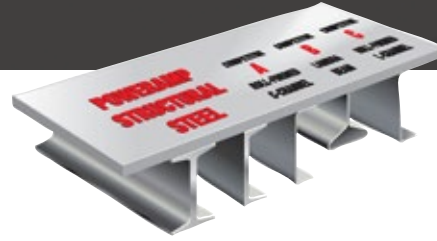
** LHP Series 6.5'x8' 35,000 CIR
with CleanSweep frame with stand
alone controller shown.*

LHP Series Hydraulic Dock Leveler

25K - 40K
CIR

6' - 7'
WIDTH

6' - 8'
LENGTH



OPERATION

The Poweramp LHP Series leveler utilizes a hydraulic operation with push-button activation to raise the leveler and automatically extend the lip. The standard lip is 16", with an operating range of 12" above and below dock level. The platform is designed to compensate for canted truck beds up to 4" and remain flush with the dock floor.

SAFETY FEATURES

- Externally mounted, non-adjustable velocity fuse is used to prevent free fall of the platform
- Built-in lockout/tagout maintenance inspection strut
- Full-range toe guards close off sides at the highest position
- Lip keepers for cross traffic support and automatic night lock security against theft



Fully hydraulic yieldable lip cylinder.

VEHICLE RESTRAINTS & ACCESSORIES

For enhanced safety, all Poweramp levelers can be equipped with light communication, iDock Controls, and vehicle restraints, which help prevent unexpected trailer departure from the loading dock. Safety barriers are also available to prevent forklift trucks from driving over the dock edge.

CONSTRUCTION

The LHP Series has proven hydraulic operation to produce a safe, reliable, yet economic hydraulic dock leveler. All Poweramp levelers are built with a durable four-sided box construction.



CONNECTIVITY

Optional iDock® Controls with online connection to myQ® Enterprise.



LHP SERIES

COMMON OPTIONS

- 3-wheel offset forklift protection
- CentraPower
- Custom interlocking
- Dock lights
- Extended lip sizes (18" and 20")
- Integrated control panel
- Vehicle restraint
- Weather seal (brush or rubber)



W194N11481 McCormick Dr. | Germantown, WI 53022
poweramp.com | sales@poweramp.com
800-643-5424



poweramp.com

Designed, Engineered, and Manufactured in the U.S.A.
© 2024 Systems, LLC/Poweramp
Consistent with our policy of continuing product improvement, we reserve the right to change product specifications without notice or obligation.

LHP 09/2024

A Division of Systems, LLC
POWERAMP
Premium Loading Dock Systems